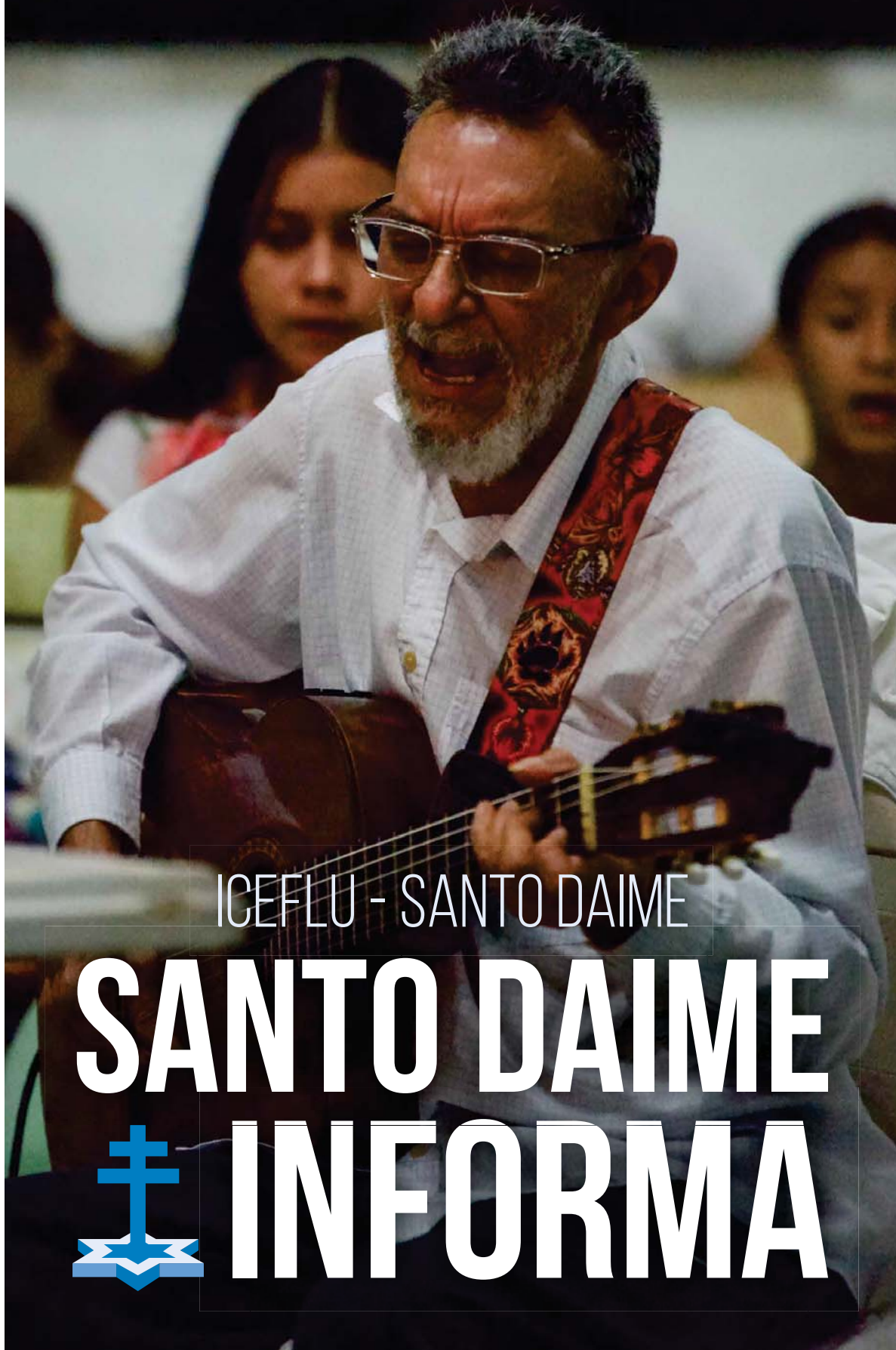




27<sup>TH</sup> EDITION  
JUNE 2022



ICEFLU - SANTO DAIME

**SANTO DAIME**



**INFORMA**



## Forest Cathedral, Mother Church of ICEFLU

**“We are pleased to see all the efforts** of our brothers and sisters to complete the work of the Mother Church, in Vila Céu do Mapiá, founded by Padrinho Sebastião. Without a doubt, it is his statement that by doing good, we will receive good. There is still a lot of work to be done that, on a daily basis, we are reaching out and trying to illuminate, and give strength to what is good for our community. Céu do Mapiá is the root, and from there the stem, branches, leaves, flowers and fruits also grow, because we are certainly watering this plant. Now the time has come for the entire irmandade to unite”



## Mother Church: Epic Civil Engineering in the Forest

The transport of 137 tons of materials and equipment to the heart of the Amazon Forest marked the resumption of work for the construction of the Céu do Mapiá Cathedral, ICEFLU's world spiritual headquarters.

An impressive feat, both due to the volume and weight of the cargo as well as the logistical challenge and natural access difficulties faced to transport it to the village. To leave Boca do Acre, we took advantage of the flood season to float the rafts through the waters of the Purus River and, in the second stage, ascend the riverbank and take all the cargo to the Fazenda community.

## WORK OF THE CATHEDRAL



From there to Céu do Mapiá, it was a journey of over 43 kilometers by dirt road. A gigantic operation that involved an intense logistic, with freight on ferries and a battalion of people. Two tractors, a backhoe, a trailer, a bucket truck, a crane, and additional truck, two lifting platforms and two generators were transported to the community. The list of materials included 15 tons of scaffolding, 7 tons of mortar, 12 tons of cement, 2 thousand liters of fuel, 1 ton of paint and 185 tons of sand, crushed stone and rock. Now, this great movement continues on the work front to build the Forest Temple. ►



## WORK OF THE CATHEDRAL



The work is being carried out with great care by Engecampo Engineering, a company hired by ICEFLU to carry out the project, and which has made some adjustments to the original project, such as the application of new piles in the foundation and the construction of reinforcement blocks in the concrete. The upper part of the 12 intermediate columns will be reinforced, as well as the transition points of the concrete arches. All this, to reinforce and give more security to the concrete structural elements of the “mother ship”.



# The Church Project

- Thermal technology to fight the heat and bring more comfort
- Acoustic system for optimal sound
- Capacity to receive more than 2 thousand people
- Renovation of Padrinho Sebastião's tomb
- 5,700 square meters of construction
- 21 meters high

## Community improvements

IN ADDITION TO THE PHYSICAL WORK OF THE MOTHER CHURCH, THE PROJECT HAS ENABLED INFRASTRUCTURE IMPROVEMENTS IN VILA CÉU DO MAPIÁ, CONTRIBUTING TO THE DEVELOPMENT OF THE COMMUNITY:

- 
- **Improvements in community infrastructure:**  
Jardim da Natureza, Telecentro, Casa de Música, Lua Branca Culture, Sports and Leisure Centre, Cipó de Ouro Gym, Santa Casa, Health Centre, General Kitchen Renovation
- 
- Maintenance and reopening of 43 km of road to the Fazenda
  - Activation of socio-environmental, art, education and health programs and projects
  - Projects at Cruzeiro do Céu State School
  - Support to the Residents' Association
  - Community Forest Management
  - Adaptation of inns

# Evidence



"I believe that by the will of God and also of our fellowship, our Mother Church will be completed. The project takes time, as we all know, but will be completed, God willing."

**Padrinho Valdete Mota de Melo,  
commander-in-chief of ICEFLU.**



# Evidence



“The work of the church is one of the most significant actions for our community. We are all in the battle to improve the arrival of materials at the construction site and to finish our church”.

**Roberto Corrente,  
president of ICEFLU.**





## Evidence



“I am very grateful and happy to be part of this movement to build our Mother Church, which is very important for Céu do Mapiá and the entire irmandade. It is our place to do spiritual work, pray with conviction all together and connected with the strength of the forest and the Astral. Thank to everyone who is connected and helping to build our Church. I ask God for good health for all of us”.

**Rosineide Raulino,  
president of AMVCM.**



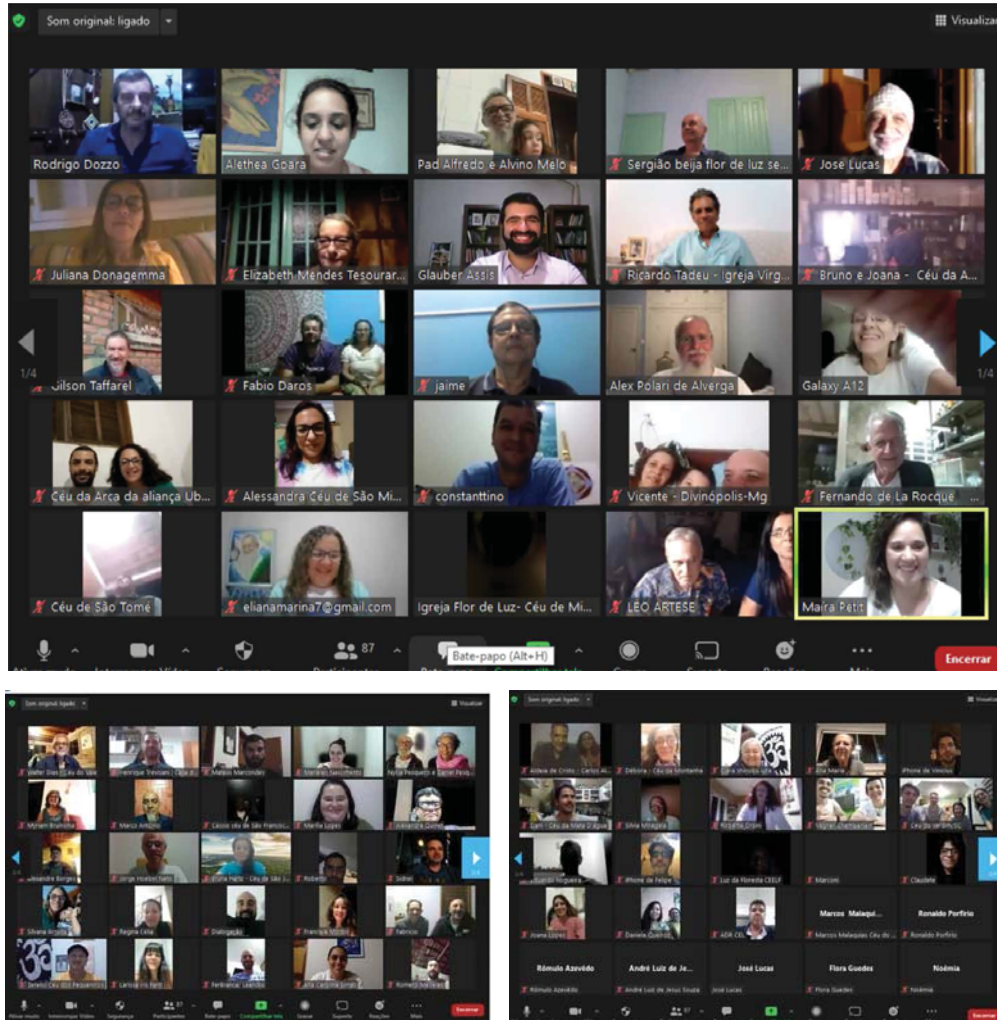
# Evidence



"Our Cathedral, which has been rising with magnitude, reveals the size of the spiritual force that will be emitted by this point of light from the middle of the Amazon Forest to the world".

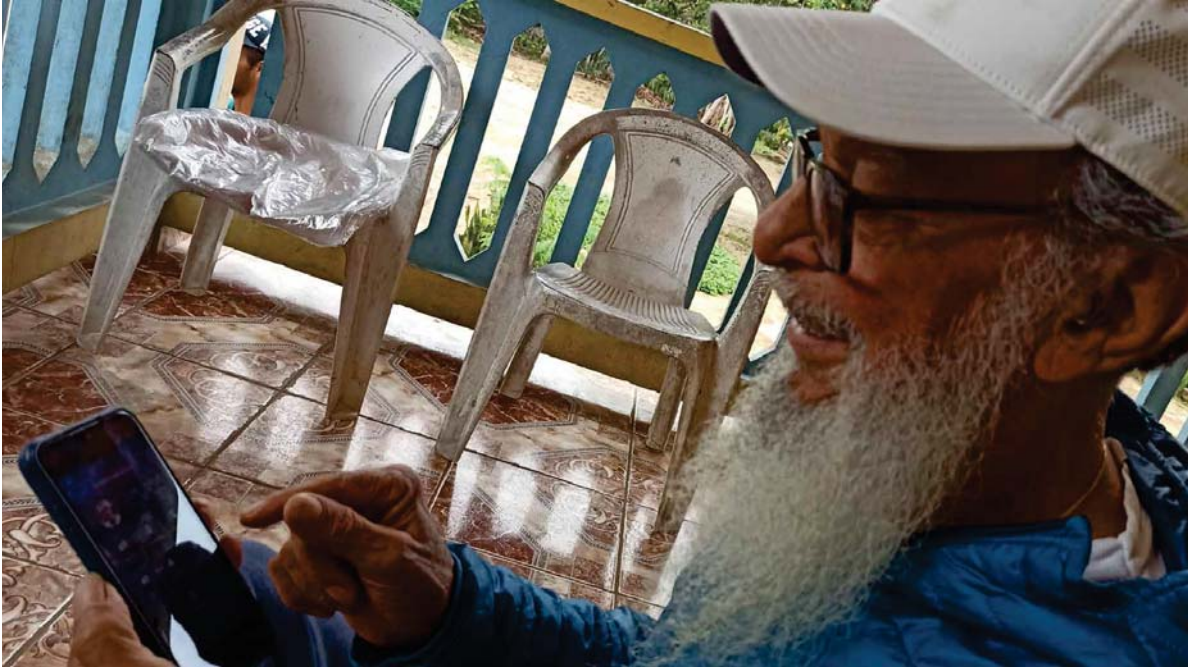
**Clara Iura, coordinator of the Santa Casa de Cura Padrinho Manoel Corrente.**

# VIRTUAL MEETING OF CHURCHES



At the end of April, the first meeting of the year with the member churches in Brazil took place. More than 100 representatives of the centers participated in the virtual meeting to deepen the commitment to the continuity of Padrinho Sebastião's spiritual mission and the collective construction of our Church. The meeting was attended by Padrinho Alfredo Gregório and Padrinho Alex Polari, members of the Superior Doctrinal Council, in addition to the Administrative Council, Executive Secretary and residents of Vila Céu do Mapiá.

# APP ICEFLU



THE APP IS THE NEW COMMUNITY SPACE FOR RELATIONSHIP AND COMMUNICATION BETWEEN THE INSTITUTION AND ITS ASSOCIATES.

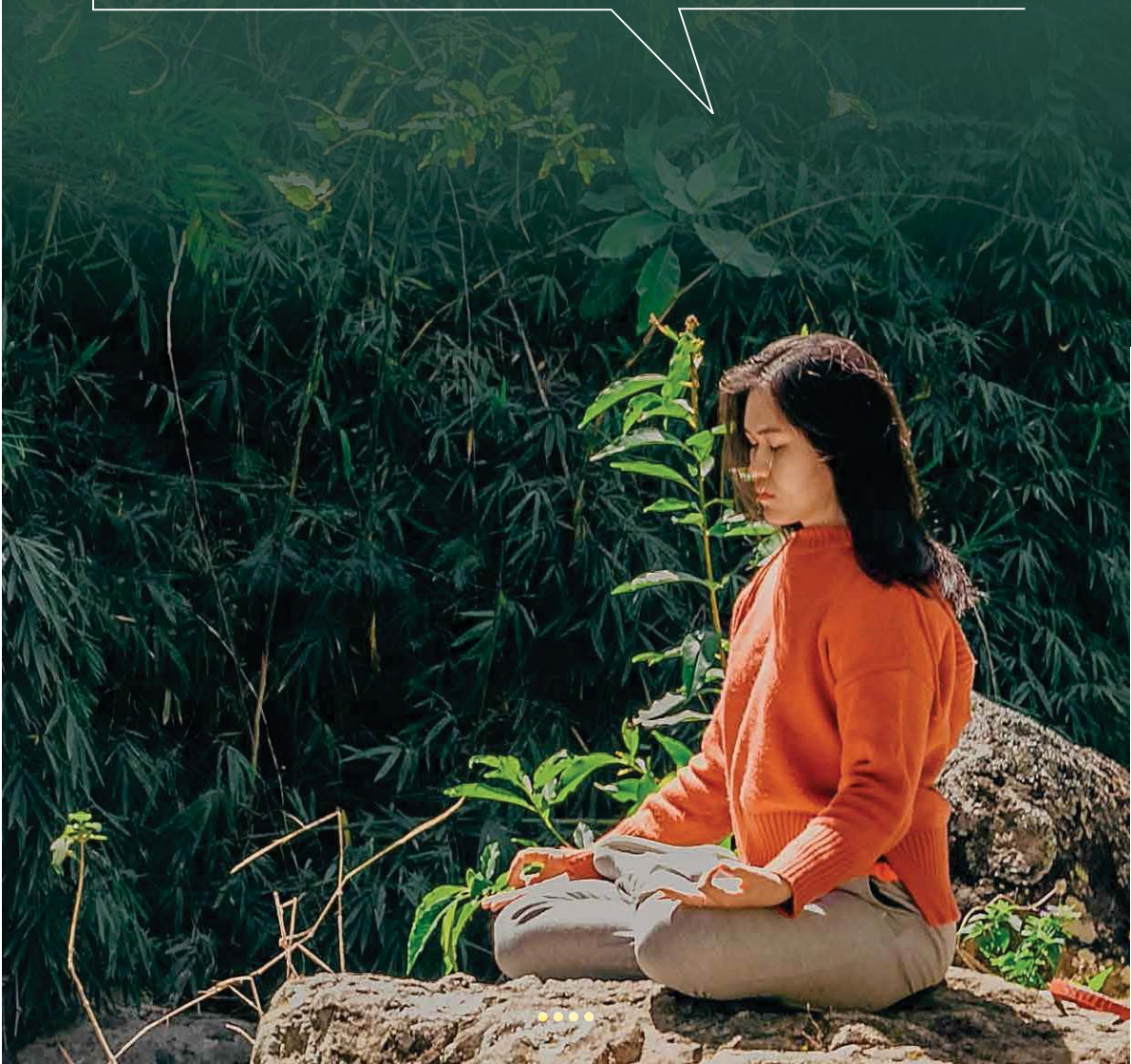
**It represents another step** in strengthening ties in our community. It brings together news, Daime literature, exclusive events and benefits in one place, as well as connecting Daimistas from around the world. Version 1.0 of the App provides services offered by the institution (financial, administrative and mental health).

LEARN MORE

<https://iceflu.org/somosmidam>

As part of ICEFLU's institutional improvement, the Mental Health sector of the Scientific Technical Department sent a memo to the associated centers to discuss the need to better organize the health teams of the churches. A call was also made to mental health workers linked to ICEFLU, with the aim of organizing a virtual meeting, reviving the old "ENCURAS" from the 90's, which brought many contributions to our work.

## Call to Mental Health Workers





WEBINARS

## 2nd Season of Webinars with Padrinho Alfredo

Taking advantage of the May festivities, AGM – Sagrada Amazônia launched the second season of webinars with Padrinho Alfredo. In partnership with ICEFLU, Padrinho's family continues the fine study of Padrinho Sebastião and Madrinha Rita's history, deepening the reflections on spirituality and community life. Precious tips on living well and precious treasures about Daime culture!



## REPRINT OF THE “EVANGELHO”

CEDOC/ICEFLU and Reviver publishing company/Yagé seal are finishing the work for the re-edition of the book “The Gospel According to Sebastião Mota”. With curatorship, organization, introduction and notes by Padrinho Alex Polari, in addition to the reorganized original content, this new edition has three unpublished lectures by Padrinho Sebastião, a new photo book, with unpublished images, new preface and glossary. The material is in the review phase and will be released soon.



## WOMEN'S WORKGROUP

# DAIME A LUZ NETWORK

The movement of the “Daime a Luz” network of the Women’s Workgroup has already begun. A form was sent to the ICEFLU irmandade with the aim of gathering people interested in participating in the network’s actions. As the first action of this collective, online circles will be promoted for pregnant and postpartum families, bringing topics of interest to this audience.



# News from Mapiá

MAPIÁ IS VACCINATED AND IS NOW AWAITING RELEASE FROM ICMBIO (THE FEDERAL INSTITUTION) TO OPEN VISITATION IN THE COMMUNITY.

A delegation from AMVCM, the Ethical-Disciplinary Council and ICEFLU met with the Federal Public Ministry and deputy Afonso in Manaus to address issues of safety, health and education and to thank the support for the covered multi-sport gymnasium (140 tons of material transported). AMVCM is preparing yet another community work effort for citizenship, together with the municipal government and Instituto Nova Era.



# Papai Velho e Mamãe Velha

One of the projects developed by Santa Casa de Cura, with support from ICEFLU, since 2018, seeks to improve the quality of life of the elderly who accompanied Padrinho Sebastião at the opening of Céu do Mapiá. The inspiration for this initiative came from Madrinha Geraldine, from Céu de Santa Maria Church, in Holland. The program has received funding from the international irmandade, providing health care, housing improvements, among others.

FOR DONATIONS:

[www.santacasadecura.org.br](http://www.santacasadecura.org.br)

# Broadcast of Céu do Mapiá Spiritual Works

Rádio Jagube will broadcast, live to the entire planet, the official hinários directly from the Mother Church in Céu do Mapiá. This unprecedented initiative will start at the June festival and is not the only news of the radio station, which completed 24 years fulfilling the mission of being the Voice of Mapiá Integration. The program is being refreshed and has a historical collection, new productions, tributes to the churches associated with ICEFLU and, recently, it started to take the sound and news of the Doctrine to the entire global community.

---

RÁDIO JAGUBE IS ON AIR 24 HOURS A DAY  
THROUGH THE APP, WEB RÁDIO AND NOW  
ON THE ICEFLU SOMOS MIDAM APP.

---

[www.radiojagube.org](http://www.radiojagube.org)

# Student Eyewear Campaign continues



Launched by the Cruzeiro do Céu State School, teachers and a group of Youth and Adult Education, the campaign continues until June 30th and counts on the help of the irmandade to enable eye exams and the acquisition of 30 pairs of glasses for Mapiá students. Community members will also be able to take advantage of discounts and easy access to the exam. From the 18,000.00 reais needed, 3,338.51 reais has already been raised.

**COLLABORATE AND SPREAD THE WORD!**



## SUPPORT



### DATA FOR DONATIONS

**BANK BRAZIL**  
AGENCY 0814-1  
CHECKING ACCOUNT 17093-3  
PIX (CNPJ) 35148.529000131

---

IBAN BR15000000000008140000170933C1  
BRASBRRJSBO

---

**ASSOCIAÇÃO AMIGOS DA SANTA CASA DE CURA**  
CNPJ: 35.148.529/0001-31  
VILA CÉU DO MAPIÁ  
FLORESTA NACIONAL DO PURUS / PAUINI  
CEP 69860-000

---

**CONTACT: MABEL BARSE +55 97 9903.1990**

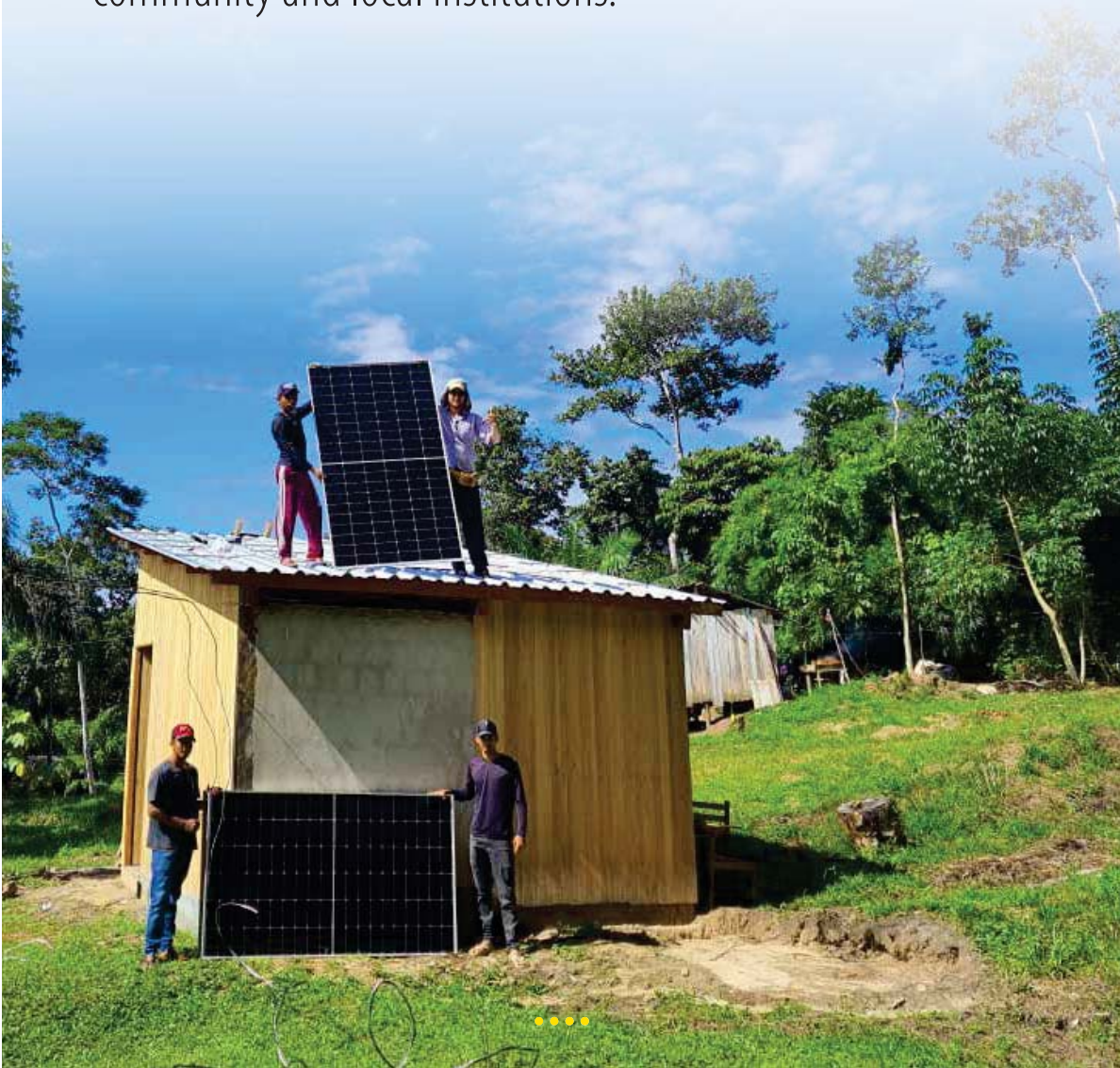
---

**MAKE YOUR DONATION**

<https://www.paypal.com>

# Solar power system benefits community

Farm São Sebastião already has a solar power system installed, benefiting the community spaces: Church, General Kitchen, Casinha de Feitio, Casa de Farinha, School and Chico Corrente Memorial. The work included training young people who supported the installation and will be the caretakers of the new system. A partnership between ISAVIÇOSA, FHFA, community and local institutions.



# MAPIÁ TAKES PART IN THE 1ST MEETING OF THE ACCORDIONISTS

The event took place during four days in the Estrela da Serra community, in Lapinha da Serra-MG, and had an online exhibition on April 23rd. The live was conducted by Saturnino Brito and had the special participation of Guilherme Granjeiro, and Zé Mota directly from Céu do Mapiá. The highlight of the broadcast was the participation and blessing of Madrinha Rita and Padrinho Alfredo. The meeting paid tribute to Glauco Vilas Boas, celebrated the birthday of brother Vicente Jr, who created the event, and was held in memory of brother Bruno Fernandes.

Watch the meeting on the Canal Jagube.



YOUTUBE

CREDITS

27TH EDITION

ICEFLU - SANTO DAIME

# SANTO DAIME

# INFORMA

**Editorial and graphic design:** Giovanni Tabolacci and Rodrigo Dozzo

**Editing and proofreading:** Flora Guedes and Ana Carolina Simas

Layout: Giovanni Tabolacci

---

**Content:** Tatiana Reis, Oswaldo Guimarães, Isabel Barsé, Alessandra Guerra, Glauber Loures, Ivo Felipe, GT Women and the CEDOC team.

---

**Photos:** Drica Veras, Alessandra Guerra, Kézia Marinho, Jorge Camurça, Thais Melo, Rosilene Raulino, Min-an (Pexels), CEDOC Collection/ authored by Clara Andreozzi.

---

**Spanish translation:** Daniel Pesquero

**English translation:** Tatiana Reis and Brock

**Final Review:** ICEFLU Editorial Board

---

**Contact us by email:** [comunica@iceflu.org](mailto:comunica@iceflu.org)  
and follow the institution's networks.



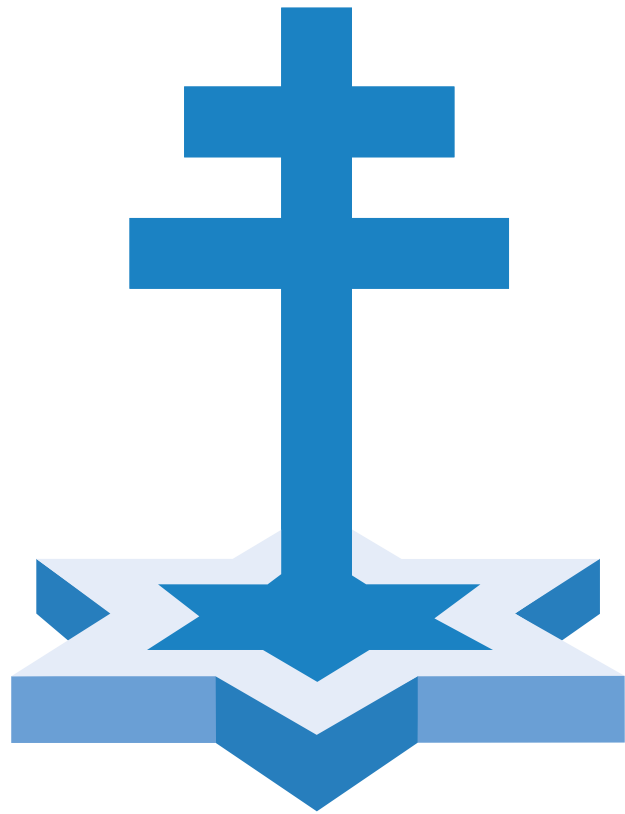
@santo.daime\_iceflu



Santo Daime/ICEFLU

....





# ICEFLU

## SANTO DAIME

**SANTO DAIME INFORMA** is produced by the ICEFLU Communication Department. This bulletin aims to report what is happening in our irmandade and within our institution. Many projects, initiatives and improvements have been carried out and we believe that, in line with our Padrinho Sebastião, what counts is the “good news post office”.

[iceflu.org](http://iceflu.org)

....